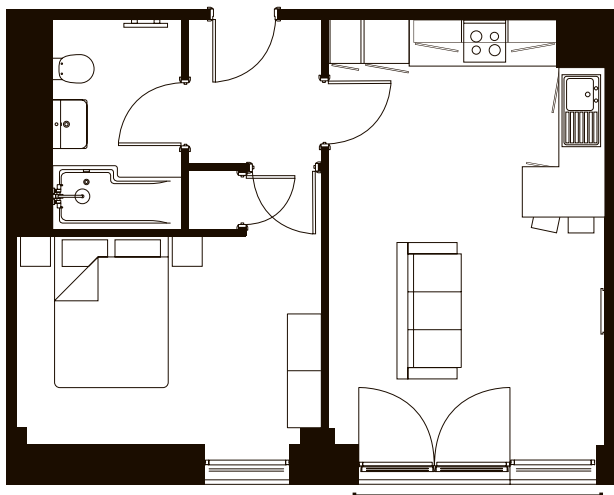





Apartment type: **13**  
Block: **North**  
Apartments: **3.12 & 4.11**



Kitchen/Living	5.59m x 3.63m	18'3ft x 11'9ft
Master Bedroom	4.01m x 3.60m	13'1ft x 11'8ft
Bathroom	2.76m x 1.70m	9'0ft x 5'5ft
Hallway	1'74m x 1.89m	5'7ft x 6'2ft
Total internal area*	42m <sup>2</sup>	452ft <sup>2</sup>

 1 Bedroom

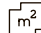
 1 Bathroom

 Integrated kitchen appliances

 Juliet Balcony

 3rd & 4th Floor

 Riverside View

 42m<sup>2</sup> Total internal area\*



#### Kettle Co Kitchens

The heart of the home has been designed with soft-close doors, wall and full height cabinets, Quartz work surfaces and up stands, handle-less kitchen cabinet doors and LED strip lights under each cabinet for an extra touch of elegance.

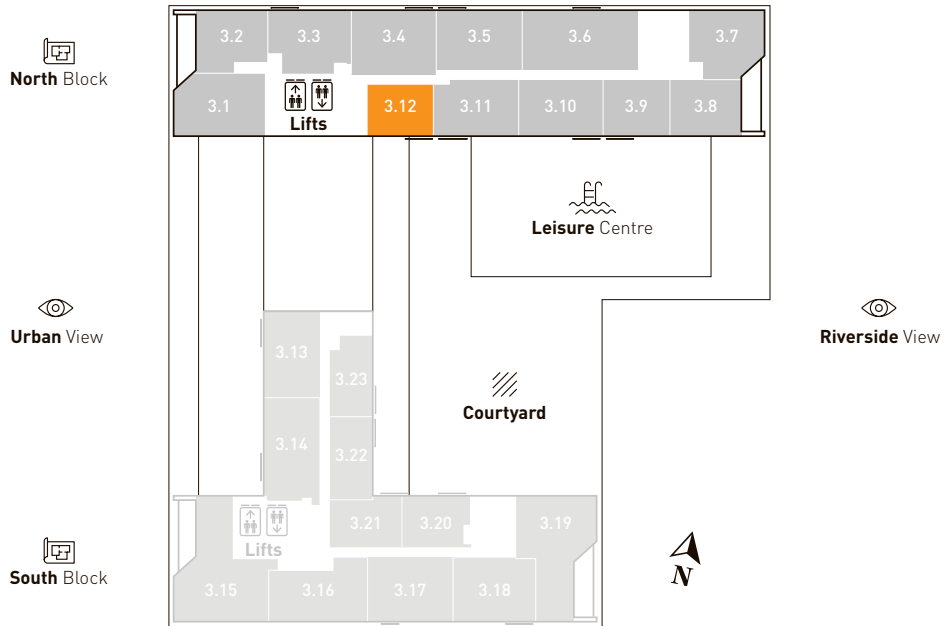
#### Kitchens also include:

- NEFF oven and hob
- Stylish glass splash back
- Integrated fridge freezer, washer/dryer, extractor hood
- Integrated dishwasher in two-bedroom apartments
- Stainless steel 1.5 bowl sink

Sketch plan and CGIs are for illustrative purposes only. All measurements, sizes and locations of walls, doors, window fitting and appliances are shown conventionally. They are approximate only and cannot be regarded as being a representation either by the Seller or their Agent. We hope that these plans will assist you by providing you with a general impression of the layout of the accommodation. The plans are not to scale nor accurate in detail. Kitchen and bathroom layouts are indicative only and may vary from plot to plot.



### FLOOR 3 - APARTMENT 3.12



### FLOOR 4 - APARTMENT 4.11

