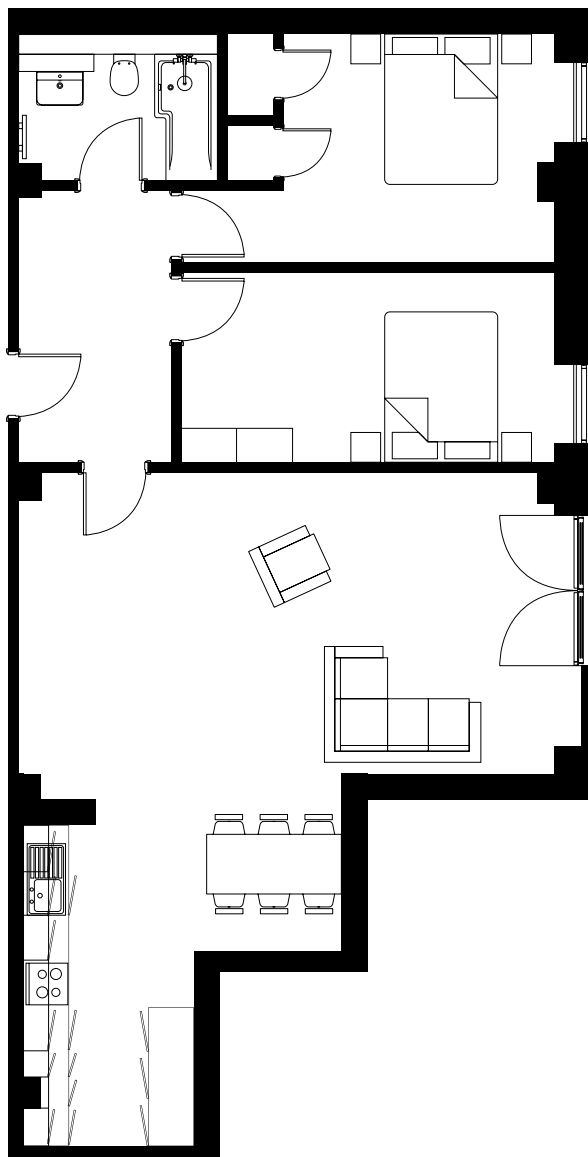




Apartment type: **29**


Block: **South**

Apartment: **1.21 & 2.18**




Kitchen/Living	9.1m x 7.2m	29'8ft x 23'6ft
Master Bedroom	5m x 3.1m	16'4ft x 10'2ft
Bedroom 2	5m x 2.6m	16'4ft x 8'5ft
Bathroom	2.6m x 1.7m	8'5ft x 5'5ft
Hallway	3.7m x 2.1m	12'1ft x 6'8ft
Total internal area*	86m ²	925.6ft ²

 **2 Bedrooms**

 **1 Bathroom**

 **Integrated kitchen appliances**

 **Built in wardrobe to Master Bedroom**

 **Juliet Balcony**

 **1 Parking Space**

 **1st & 2nd Floor**

 **Riverside View**

 **86m² Total internal area***



Kettle Co Kitchens

The heart of the home has been designed with soft-close doors, wall and full height cabinets, Quartz work surfaces and up stands, handle-less kitchen cabinet doors and LED strip lights under each cabinet for an extra touch of elegance.

Kitchens also include:

- NEFF oven and hob
- Stylish glass splash back

- Integrated fridge freezer, washer/dryer, extractor hood
- Integrated dishwasher in two-bedroom apartments
- Stainless steel 1.5 bowl sink

Sketch plan and CGIs are for illustrative purposes only. All measurements, sizes and locations of walls, doors, window fitting and appliances are shown conventionally. They are approximate only and cannot be regarded as being a representation either by the Seller or their Agent. We hope that these plans will assist you by providing you with a general impression of the layout of the accommodation. The plans are not to scale nor accurate in detail. Kitchen and bathroom layouts are indicative only and may vary from plot to plot.



FLOOR 1 - APARTMENT 1.21



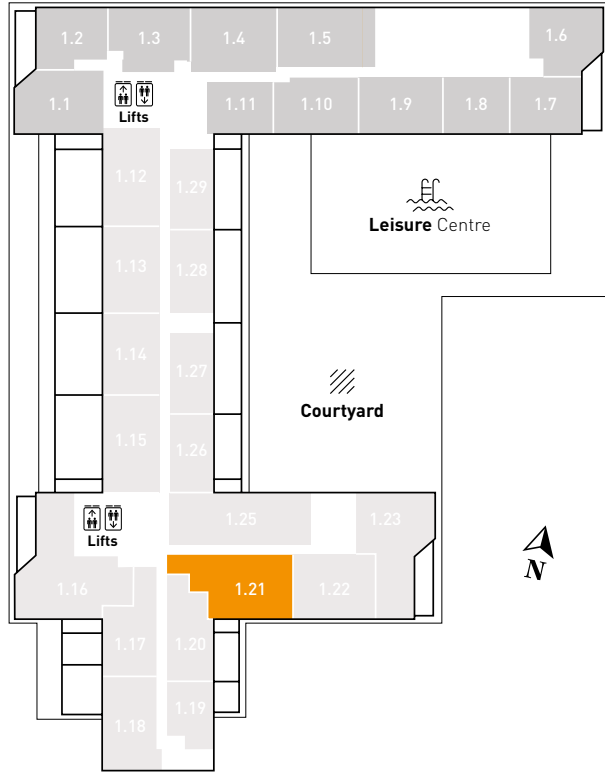
North Block



Urban View



South Block



Riverside View



FLOOR 2 - APARTMENT 2.18



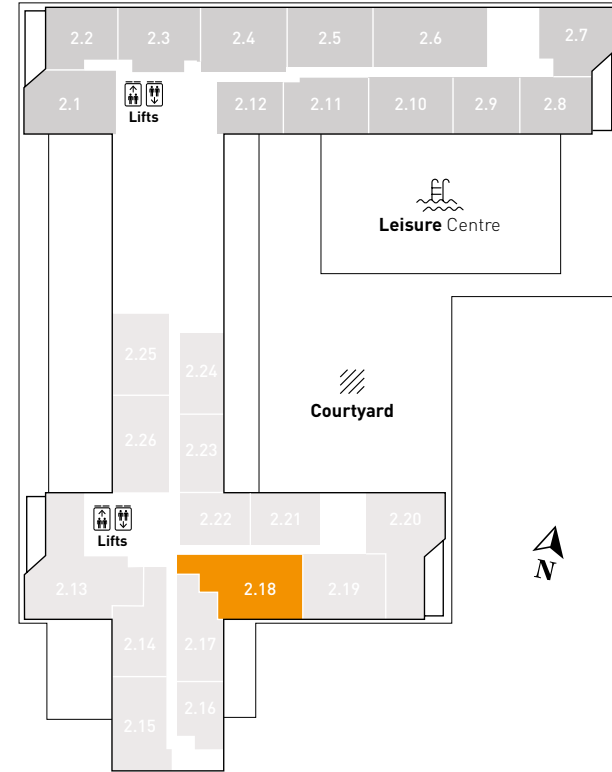
North Block



Urban View



South Block



Riverside View

